



CHATTERTON | REES



22

22 Smith Terrace

Chelsea, London, SW3 4DL

£4,000,000



22 Smith Terrace



Description

A stunning three bedroom house on the highly sought after Smith Terrace in Chelsea. Spanning in excess of 2020sqft this house has been totally remodeled by the current owner with an impressive entrance that leads down in to the main living area that has floor to ceiling glass rear wall that opens on to the terrace garden.

The kitchen that has all Gaggenau appliances is on the lower floor with great storage space and bi fold doors to a further small terrace area allowing natural light and air in to the lower level.

There are three double bedrooms with the master being on the top floor and all three benefit from en suite bathrooms and top quality built in storage.

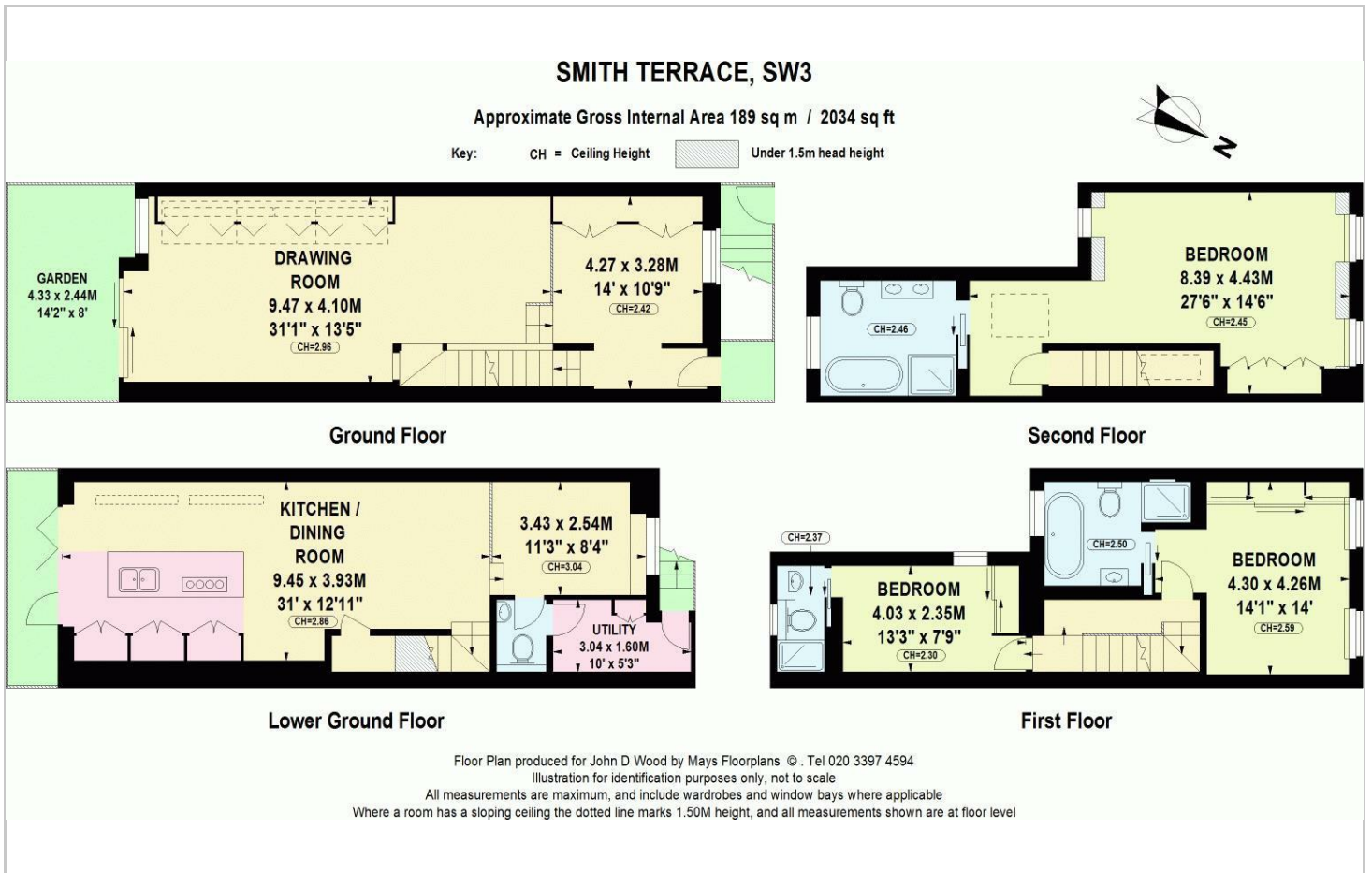
The house itself has virtually been rebuilt since the owner first purchased the house leaving it very well balanced throughout with high ceilings on all floors especially the ground and the lower, as well as renewing all AV this year the air conditioning has also been upgraded throughout.

- Three Bedrooms(potential for a fourth)
- Freehold
- Excellent Entertaining Space
- Over 2000sqft
- Three En suite Bathrooms
- Air Conditioning

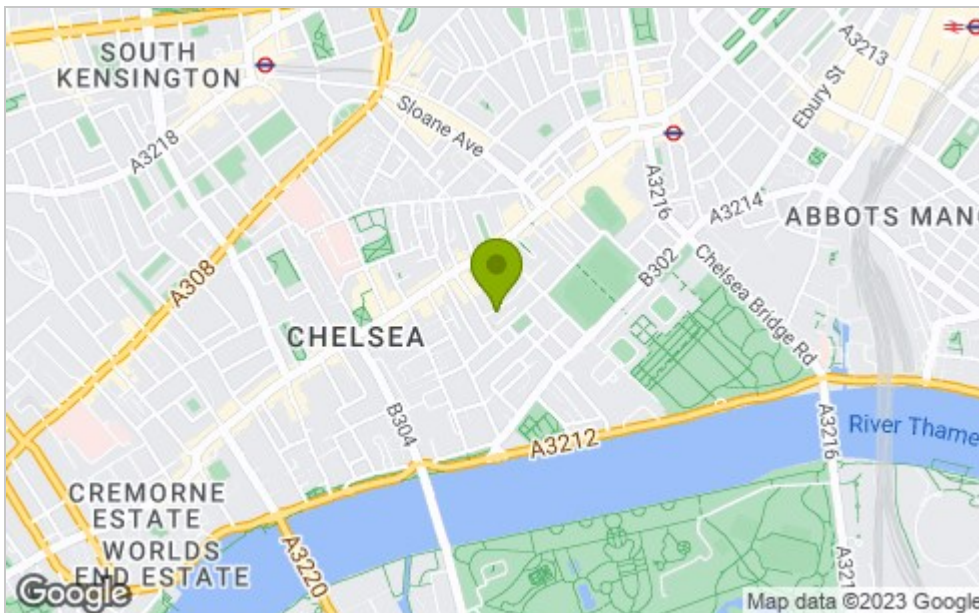




Floor Plan



Area Map



Viewing

Please contact our Chatterton Rees Office on 020 3780 0580 if you wish to arrange a viewing appointment for this property or require further information.

These particulars, whilst believed to be accurate are set out as a general outline only for guidance and do not constitute any part of an offer or contract. Intending purchasers should not rely on them as statements of representation of fact, but must satisfy themselves by inspection or otherwise as to their accuracy. No person in this firm's employment has the authority to make or give any representation or warranty in respect of the property.

Energy Efficiency Graph

